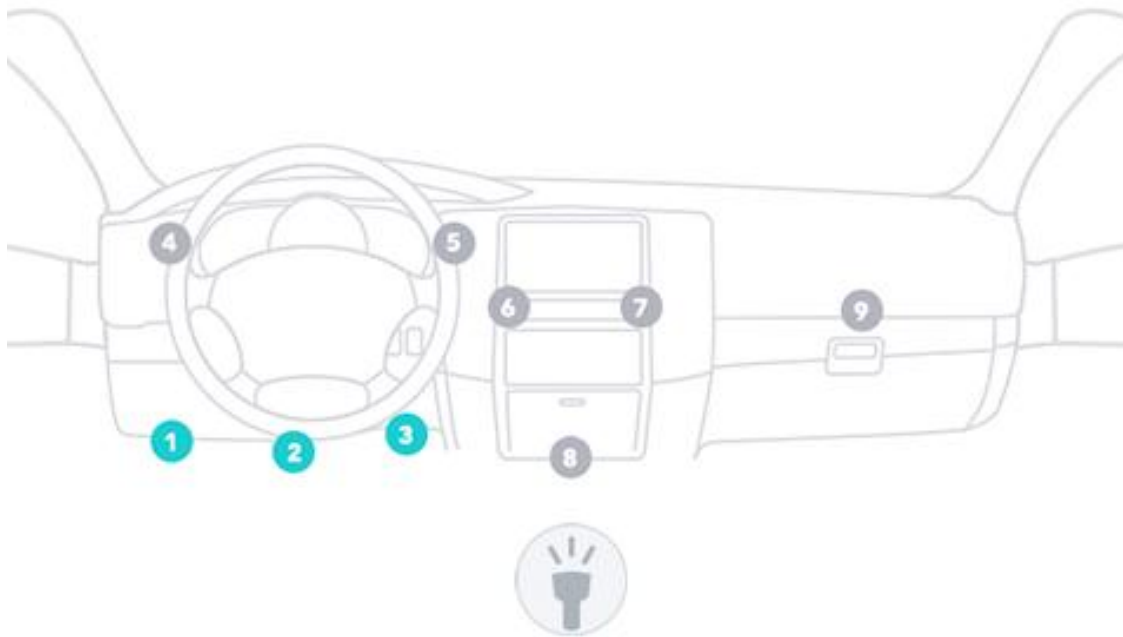
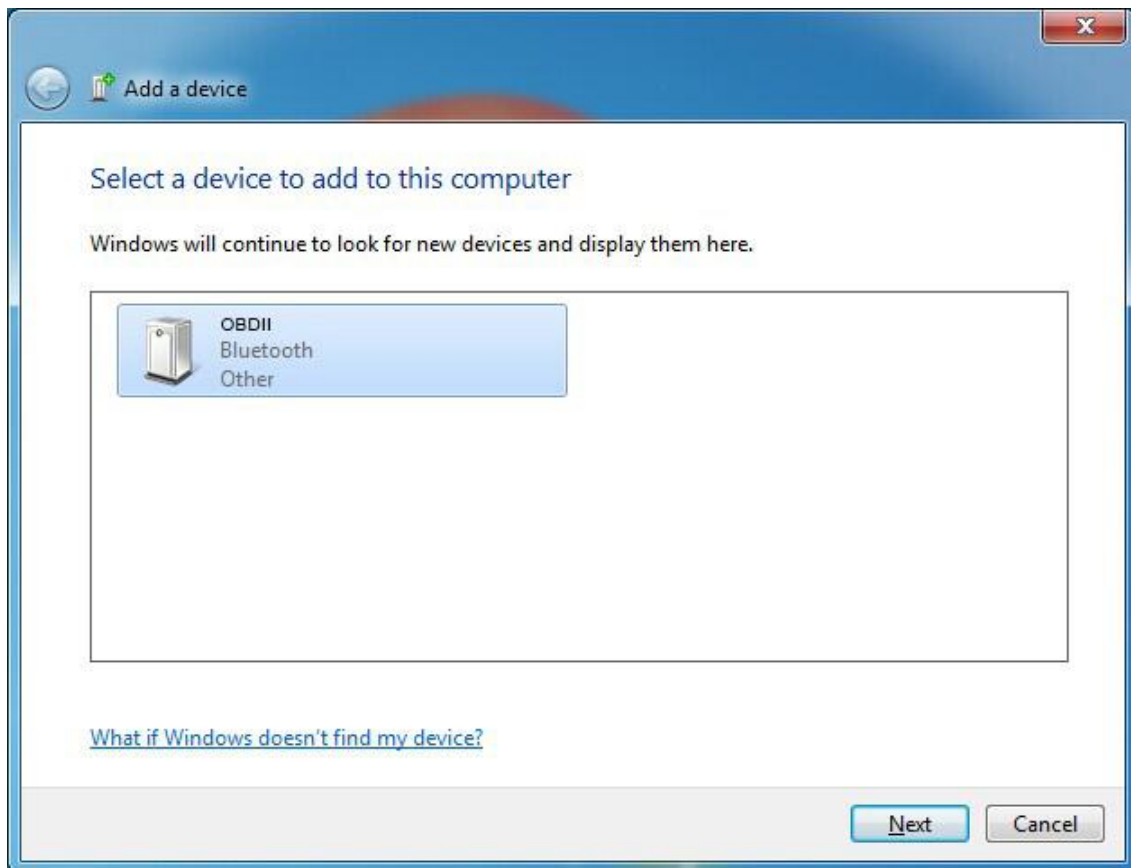


Bluetooth OBDII Connection Windows

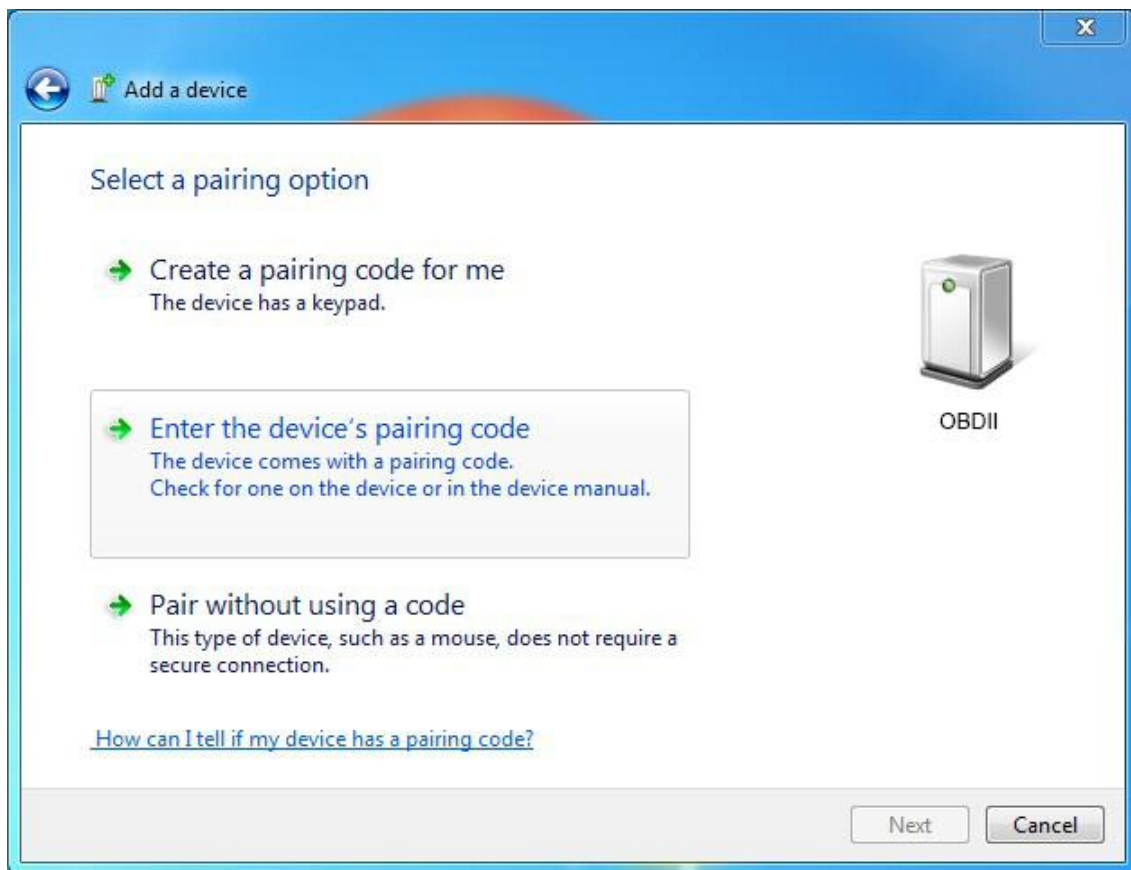
1. Install OBDII



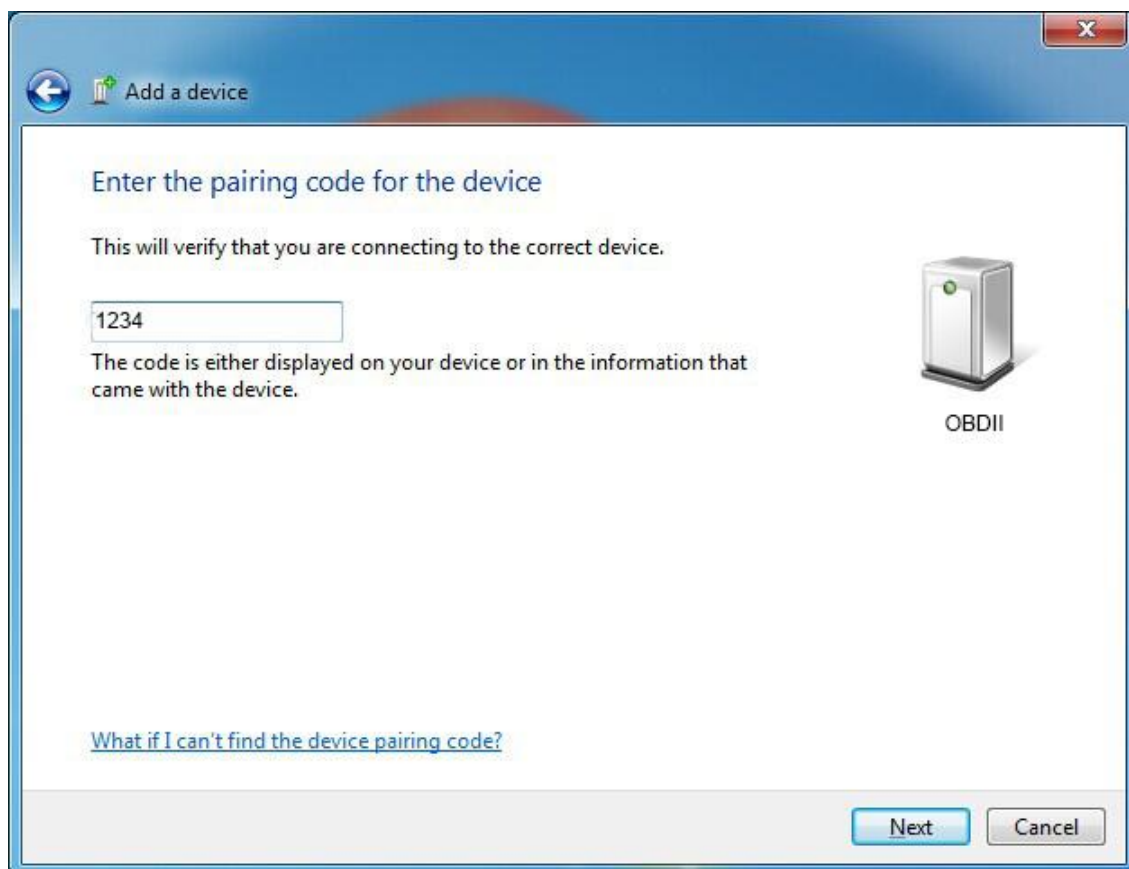
2. Install ScanMaster-ELM software
3. Open Windows Bluetooth, Click Add a Device Search OBDII Bluetooth



4. Double-click OBDDII Pop up Select a pairing option Choose Enter the device's pairing code



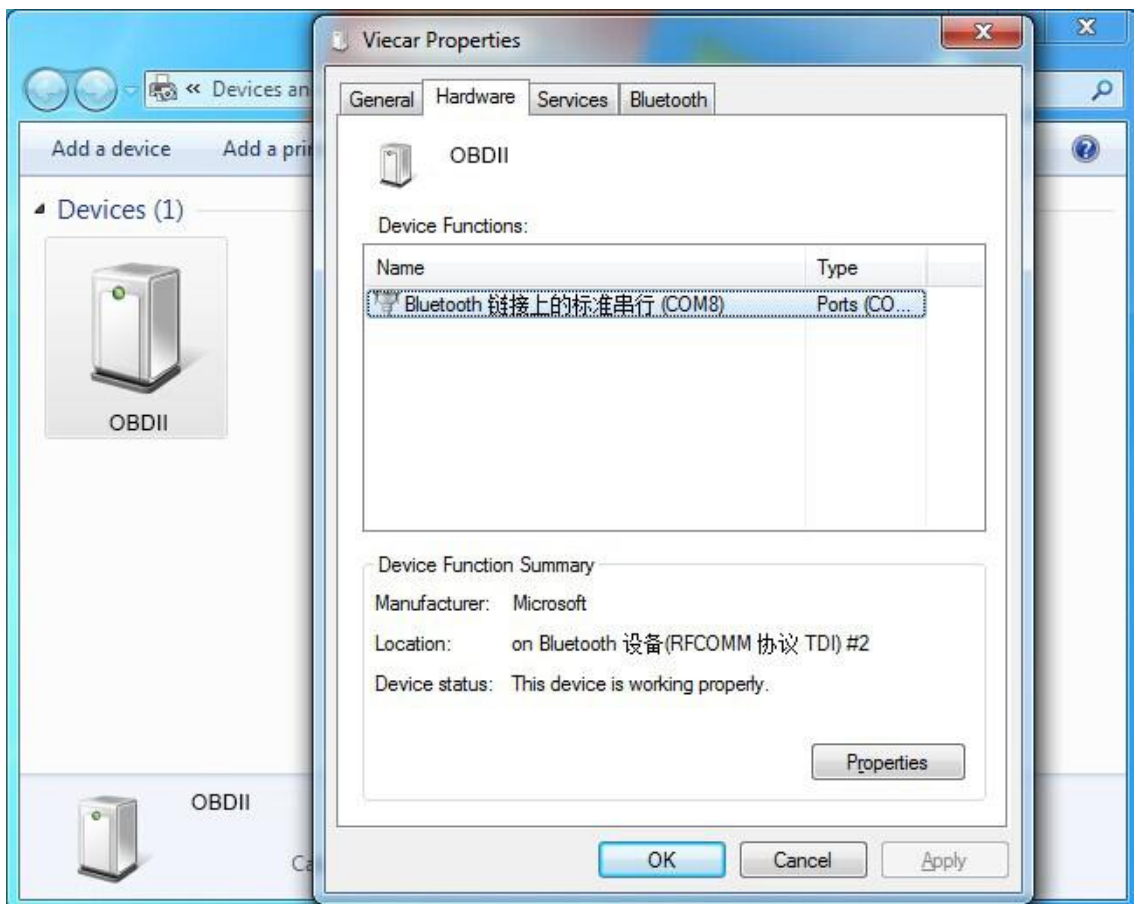
5. Enter Pairing code "1234", click Next



Connection Success

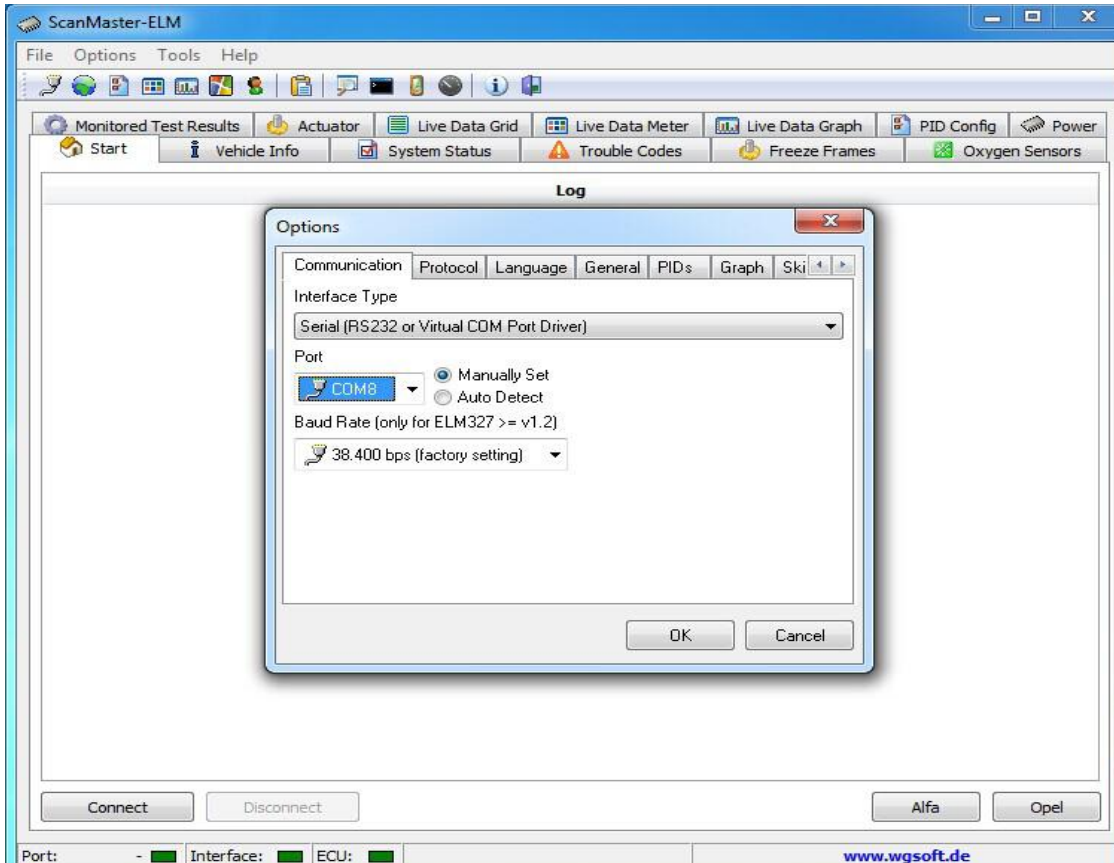


6. Open Show Bluetooth Devices get OBDII Device Functions's COM Ports



7. Run ScanMaster-ELM click communication setting Port [Interface Type Choose Serial (RS 232

or Virtual COM Port Driver; Protocol choose Automatic)



8. Click Connect OBDII

